

Duration and Mode of Attendance

You have a choice of:

- Postgraduate Diploma, awarded on successful completion of four modules and is two years (four semesters) in duration
- Masters: On successful completion of the PGD you may continue to MA level. This requires the completion of a research project which takes a further year
- Postgraduate Certificate: on successful completion of two modules (two semesters)

Application Process

There are two enrolments on this programme, one in September and the other in January.

Online application forms and guidance notes are available at:

<http://www.campusone.ulster.ac.uk/>

If you would like to visit Campus One, and browse for information on e-learning, required skills, fees and student experiences, go to:

<http://www.campusone.ulster.ac.uk/potential/>

Entry Conditions

PGDip: You should normally hold a degree in a relevant discipline.

MA: You should preferably hold a good honours degree or equivalent qualification in a relevant discipline.

Exceptionally, candidates who do not satisfy these requirements may, by virtue of relevant experience or learning, be admitted.

Students who satisfactorily complete the Postgraduate Diploma at the required level will automatically be considered for progress to the MA. An interview may form part of the application process.

Further Information

For an informal chat about the programme, course and delivery, please contact:

Dr Elizabeth Crooke
Course Director
PGD/MA Museum Practice & Management
School of English, History & Politics
Humanities Research Institute
University of Ulster
Magee campus, Northland Road
LONDONDERRY
Northern Ireland BT48 7JL

Tel: +44 (0) 28 71375431

Email: em.crooke@ulster.ac.uk



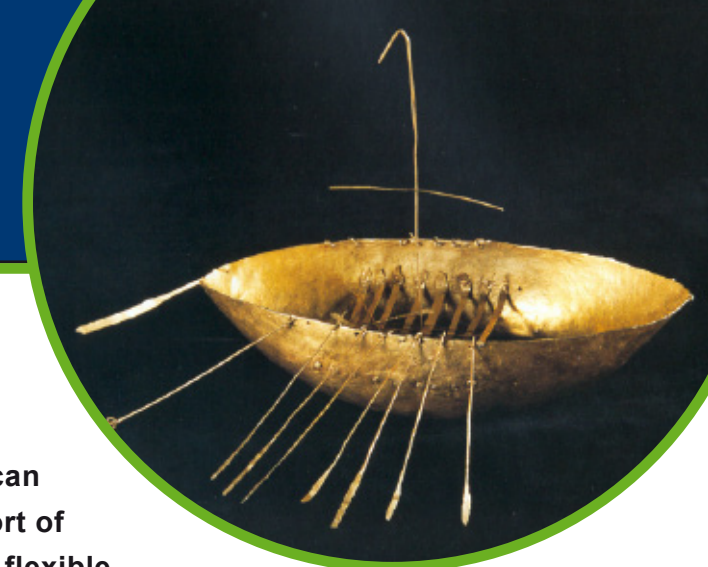
Do you work in museums and wish to improve your skills?

This established online programme can be undertaken part-time in the comfort of your own home or workplace. With a flexible mode of study, you have the choice of taking short modules in specific areas of museum practice that interests you or number of modules leading to qualification of postgraduate diploma or Masters Degree.

The programme has been brought to you by University of Ulster, through the School of English, History and Politics, and created with the requirements of the Museum Standards Programme (Ireland) in mind. Course Tutors have linked with professionals in the museum sector to bring you innovative and relevant course material.

All course materials are provided in an interactive learning environment in which you will have regular contact with course tutors and other students on the programme.

The University of Ulster has a well-established track record of expertise and experience in delivering courses to the cultural and heritage sectors.



www.arts.ulster.ac.uk

Postgraduate Diploma/MA
Museum Practice & Management

As part of this programme, you will benefit from:

- A programme designed to develop the understanding necessary for the standards and accreditation schemes in Ireland and the UK
- Modules that draw on national and international examples of best practice
- Contact with professionals who have a wealth of experience in the museum sector
- Tutors with proven research acumen and distinguished publishing profile
- Access to Campus One, the University of Ulster's well-established and renowned online distance learning facility
- Contact with colleagues across the museum sector

Module Information

Modules have been designed to reflect innovative and current research in these areas and will equip both graduates and those already working in the museum sector with the appropriate skills for further academic and professional development.

Museums and Culture: Policies and Values

This module explores concepts of policies and value in museums with particular focus on the Irish sector. Drawing on local, national and international examples, themes such as constructing meaning through museums and heritage, identity and representation, social policy, cultural diversity and community inclusion will be investigated and examined. This will be used as a means to evaluate contemporary museum policy, governance and planning.

Communication and Learning in the Museum

This module will develop an understanding of how museums communicate, both through exhibitions and learning. Using examples from the Irish museum sector, we will the development of museum text, communication through objects and space, and key issues for exhibition development, such as funding, outreach and community involvement.

Management and Strategy for the Museum

By drawing on the Irish experience, as well as international examples, the module considers the inter-dependent activities of policy implementation, collections management and care, financial management and marketing.

Collections Care and Management

This module develops an understanding of the museum's role in relation to collecting, documentation, conservation, monitoring and other aspects of collections care and handling. Although reference is made to international examples, we particularly draw on the conditions and experiences of Irish museums.

MA Research Project

On successful completion of the PGD, students may continue to MA level through completion of a MA research project. This project allows you undertake a sustained and rigorous piece of research which can be presented as an article suitable for publication. All students are assigned a Project Tutor and receive guidance in research methods.

Course delivery

This course is delivered by Campus One, recognised as one of the leading providers of distance learning in the world. Programme materials include interactive online lectures, seminars, tutorials and tasks. Students will also be expected to pursue self-directed learning, and will be given advice for reading and other forms of research.

